



482

PERFORMANCE & LUXURY

RESTORING BALANCE TO THE CATAMARAN UNIVERSE


What does it mean to be in balance, to stay in balance?

We think it's finding that perfect place where our needs and desires are met in just the right measure.

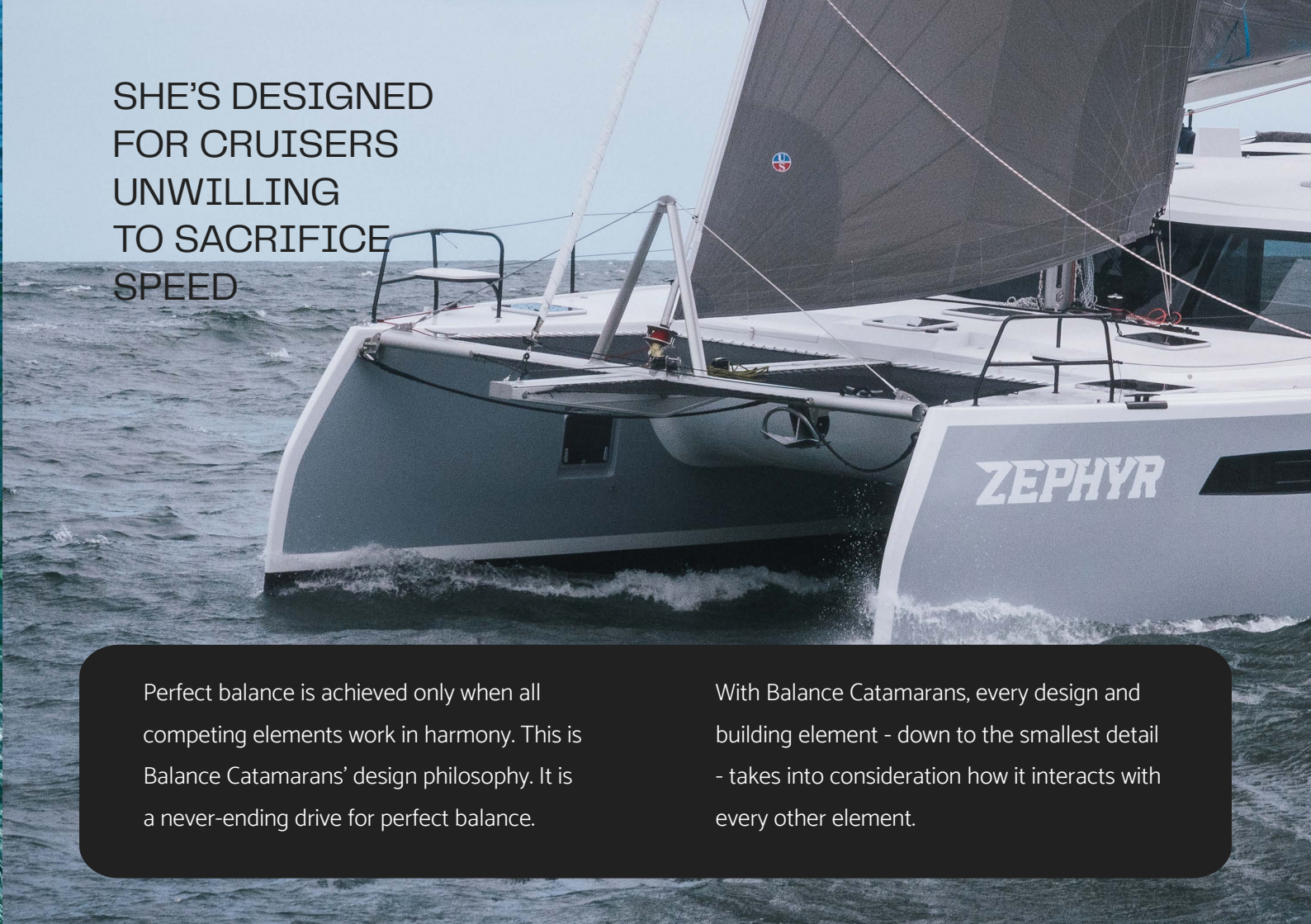
The Balance 482 delivers that right measure with its balance of speed, design, quality, and comfort.







"This is one very, very fast catamaran
laden or empty...a sort of BMW M series
for the open seas." - Multihulls World. 2019

A white catamaran sailboat, named 'ZEPHYR', is shown from a side-on perspective, sailing on a dark, choppy sea. The boat has two hulls and a large, dark sail. The name 'ZEPHYR' is printed in white on the side of the right hull. The boat is moving quickly, creating a white wake. The sky is a pale blue.

SHE'S DESIGNED
FOR CRUISERS
UNWILLING
TO SACRIFICE
SPEED

Perfect balance is achieved only when all competing elements work in harmony. This is Balance Catamarans' design philosophy. It is a never-ending drive for perfect balance.

With Balance Catamarans, every design and building element - down to the smallest detail - takes into consideration how it interacts with every other element.

PERFORMANCE

PRINCIPAL DIMENSIONS

Length Overall	14,71 m	48,26 ft
Length Waterline	14,71 m	48,26 ft
Beam Overall	7,9 m	25,91 ft
Draft (Board Down)	2,2 m	7,22 ft
Draft (Board Up)	1,16 m	3,81 ft
Air Draft	21,76 m	71,39 ft
Bridgedeck Clearance	0,81 m	2, 807 ft
Displacement (Base Boat)	13 300 kg	29 321 lbs

SAIL AREAS

Sail Area Total (100% Foretriangle)	133,1 m ²	1 434 ft ²
Mainsail	94,47 m ²	1 017 ft ²
Working Self-Tacking Jib	36,25 m ²	390 ft ²
Screacher	88,7 m ²	954 ft ²
Asymmetrical Spinnaker	184,34 m ²	1 984 ft ²

Balance Catamarans® reserves the right to make alterations to specifications and general arrangements without notifications.

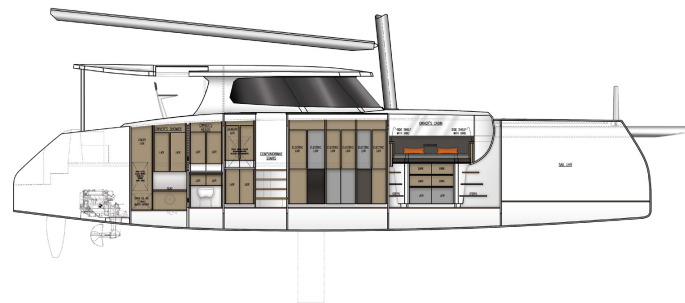
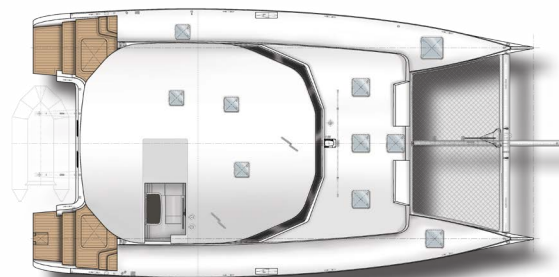


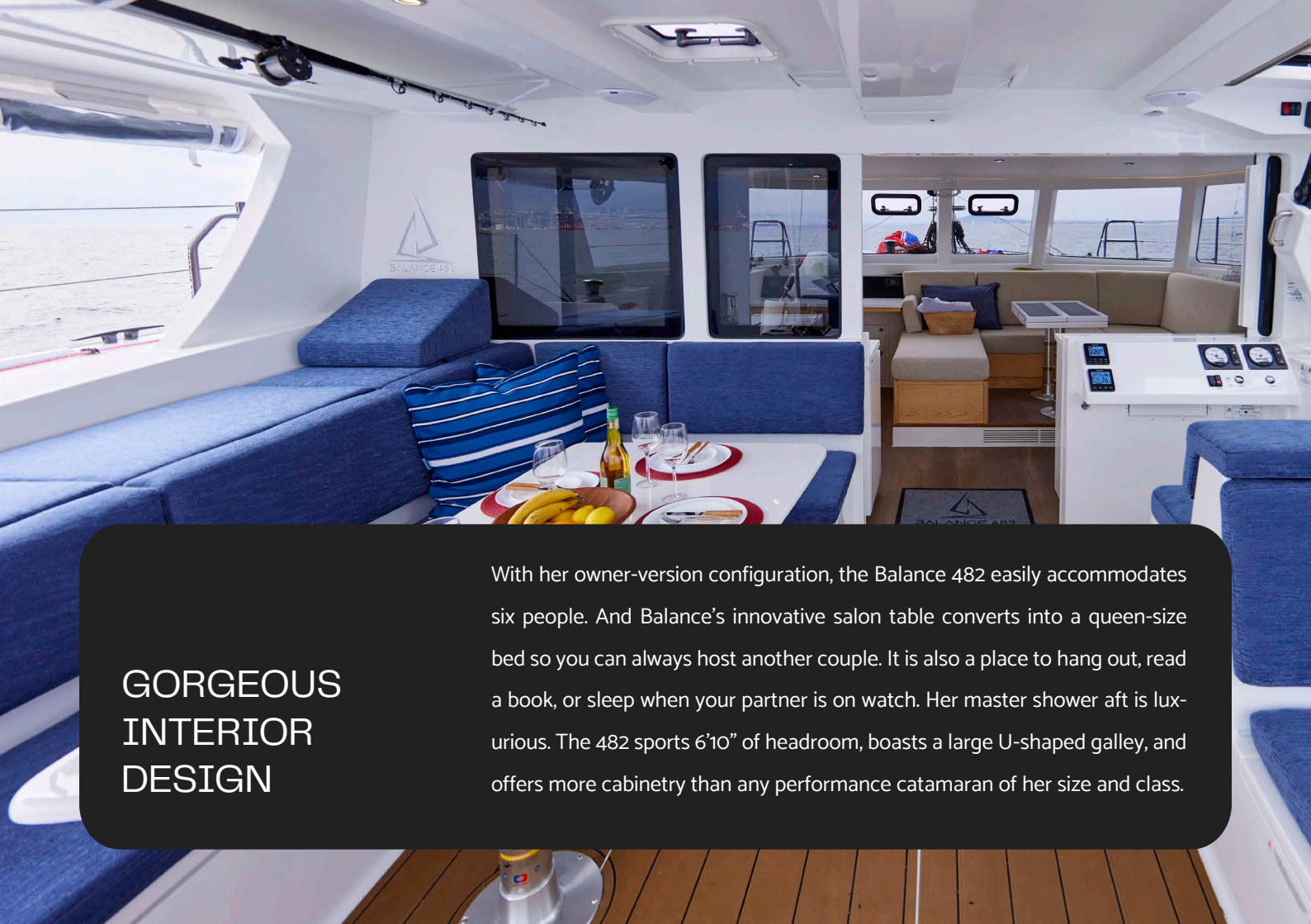
GREEN & STRONG

With her powerful 1,480-square foot-sail plan the Balance 482 ghosts along in 5 knots of wind while others are burning diesel. But when its blowing, furl in her headsails, reef her down, and fly. She is built to withstand the worst weather.

GENERAL		
Engines	2 x YANMAR 4JH45 X SD60	
	2 x 34 kw / 2 x 45 hp	
Fuel Capacity	2 x 400 liters	2 x 105 gals
Fresh Water Capacity	2 x 390 liters	2 x 103 gals
Black Water Capacity	2 x 60 liters	2 x 16 gals
Co-Designers	Phillip Berman and Du Toit Yacht Design	







GORGEOUS INTERIOR DESIGN

With her owner-version configuration, the Balance 482 easily accommodates six people. And Balance's innovative salon table converts into a queen-size bed so you can always host another couple. It is also a place to hang out, read a book, or sleep when your partner is on watch. Her master shower aft is luxurious. The 482 sports 6'10" of headroom, boasts a large U-shaped galley, and offers more cabinetry than any performance catamaran of her size and class.

AWARD-WINNING VERSAHELM®

The new 482 delivers expansive sight lines, the result of technological innovations. The flow and openness between the main salon and cockpit are superbly designed with the VersaHelm® - a helm station that swings up and down with ease. The VersaHelm® has revolutionized all weather sailing and been copied by others. At Balance, our quest for perfect balance means we innovate, we create, we imagine better sailing experiences at every stage. And then we build it.





SPEED AND EASE OF OPERATION IN BALANCE

The 482 is fast, but how does she balance the need for speed with the reality of singlehanded sailing? Her self-tending blade jib makes tacking a simple matter of turning over the helm. All of her reefing and sail management takes place at the upper helm station.

With her dual furling headsails, electric winches, and mainsheet system that operates without a traveler, her ease of sailing is remarkable.

“It was clear that Berman and Du Toit had spent hundreds of hours to design what they felt was the ultimate blue-water performance cat. “

- Multihulls Quarterly

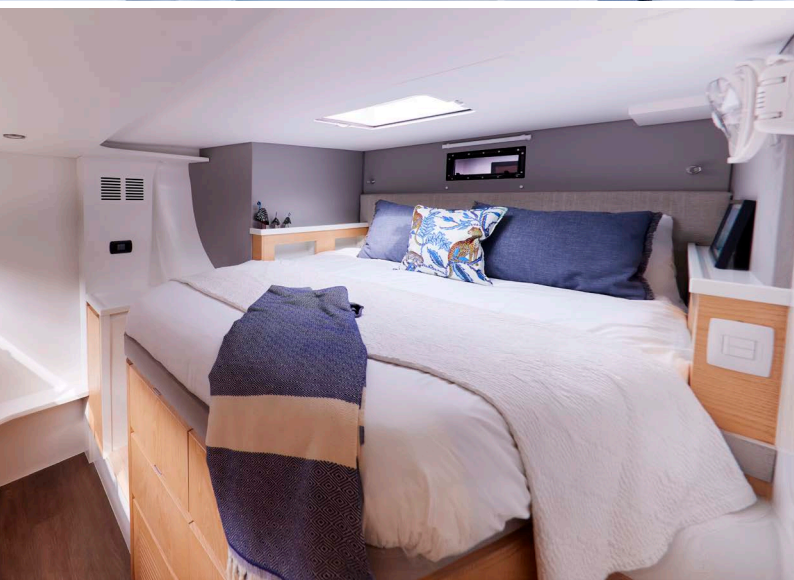


FAST BUT ALWAYS GRACIOUS

Design Matters
With Every Balance

We take our quest for perfect balance into every detail, making the Balance 482 a sheer delight to live on. It is the most gracious liveaboard catamaran to be found today. Its luxury is in perfect harmony with its power.

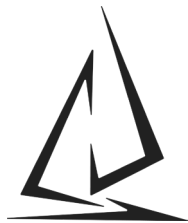




BALANCE 482


There truly is “no place like home.”


She's a pleasure to move about on whether that's cooking, sleeping, lounging, bathing, dining or entertaining friends and family. There is a place to store everything on the 482, and a lot of places to just hang out and relax. You can pilot her up top in fair weather, pilot her down in the cold, you can lounge and read inside or outside, turn your tables into beds, into dining tables, into pleasure nooks for reading or watching the latest film.




Balance Catamarans builds a range of semi-production, handcrafted performance sailing catamarans of uncompromising quality, ranging from 42 to 75 feet.

Balance Catamarans is a PA-based LLC with its offices in St. Augustine, Florida and Haverford, Pennsylvania

 385 W. Lancaster Ave,
Suite 202, Haverford, PA 19041

 models@balancecatamarans.com
www.balancecatamarans.com

 +1 484-413-2132

CONTACT US